

r



Hampshire
Safeguarding
Children
Board

**Induction & Welcome
Pack
for HSCB and sub-group
members**

Contents

Safeguarding Children Board	3
Structure	5
Membership	7
Sub Groups	19
Glossary	22
Key Safeguarding Documents	23

***'Welcome to the Hampshire Safeguarding Children Board (HSCB)
Thank you for taking on this very important role'***

Introduction

Safeguarding and promoting the welfare of children is a shared responsibility and a high priority for Hampshire agencies. It is the process of protecting children from abuse or neglect, preventing impairment of their health and development, and ensuring they grow up with safe and effective care enabling them to have optimum life chances and enter adulthood successfully.

The Children Act 2004 (Section 13) requires that children's services authorities must establish a Local Safeguarding Children Board (LSCB) for their area. The Act prescribes the partners the LSCB must include, and says that it should also include any other relevant partners which the Board, after consultation, agrees on. The LSCB is a statutory body, and part of a wider strategy for safeguarding and promoting the welfare of children, the duty (under Section 11) with which all children's services authorities and their partner agencies are charged.

Hampshire Safeguarding Children Board (HSCB) is responsible for co-ordinating and ensuring the effectiveness of local work to safeguard and promote the welfare of children.

The Board Business Plan and Annual Report sets out its priorities and outcomes for supporting the Hampshire's Children and Young People Plan 2009 -12.

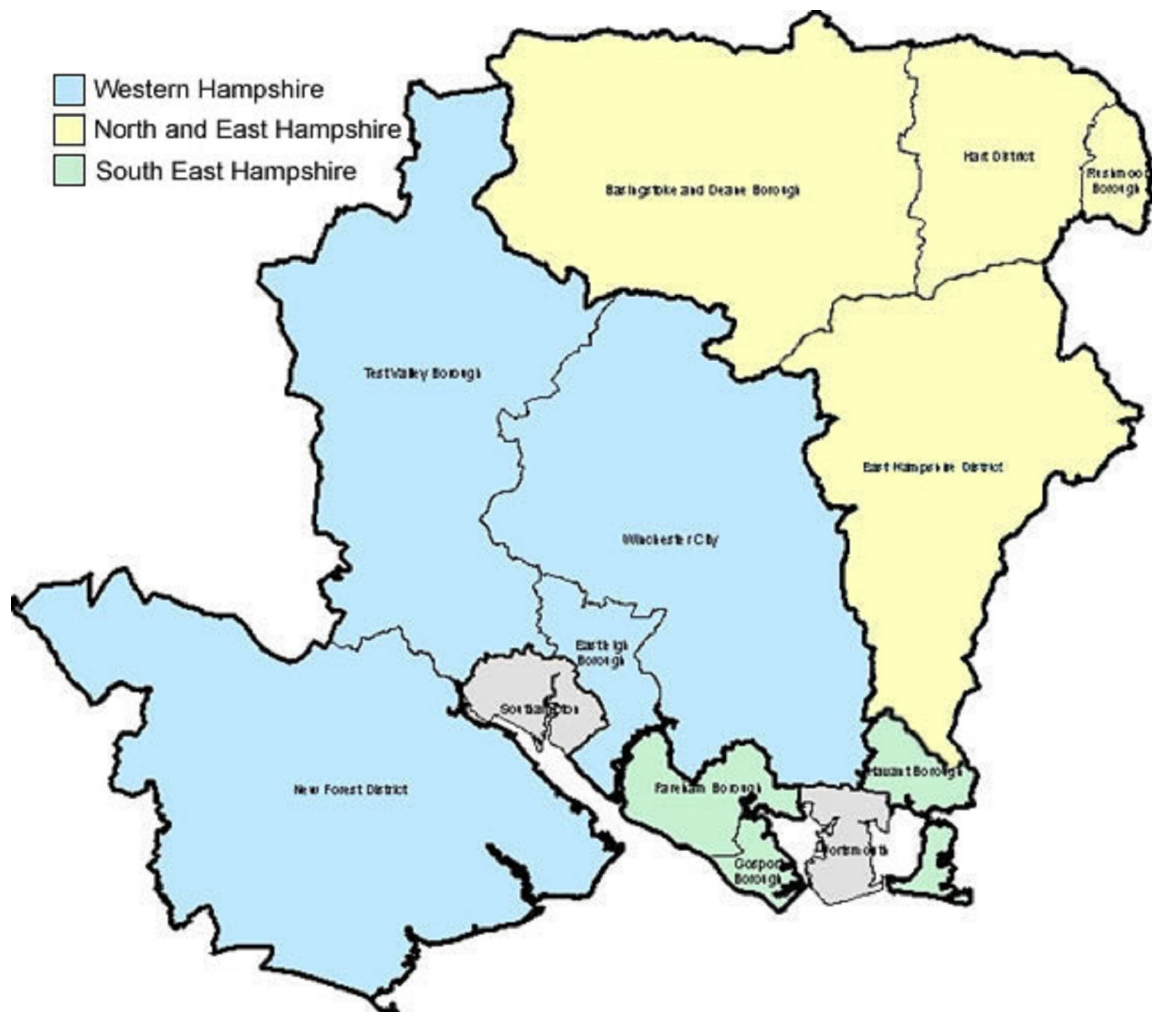
All children and young people regardless of age, disability, gender, race or sexuality are considered within the work of the Board. The Board will ensure the participation of children and young people by applying the principles of the Children and Young People's Participation Strategy to its work.

"All agencies working with children firstly, have their own individual safeguarding responsibilities and secondly, need to work together in a co-ordinated way to help to keep children safe. Being a member of the HSCB gives you a chance to put these principles into practice. I welcome you to this role and hope you enjoy being an active member of the board".

Clare Chamberlain – Independent Chair



MAP



HSCB covers the whole of Hampshire, excluding Southampton, Portsmouth and Isle of Wight. HSCB does, however, work closely with the LSCBs for these areas.

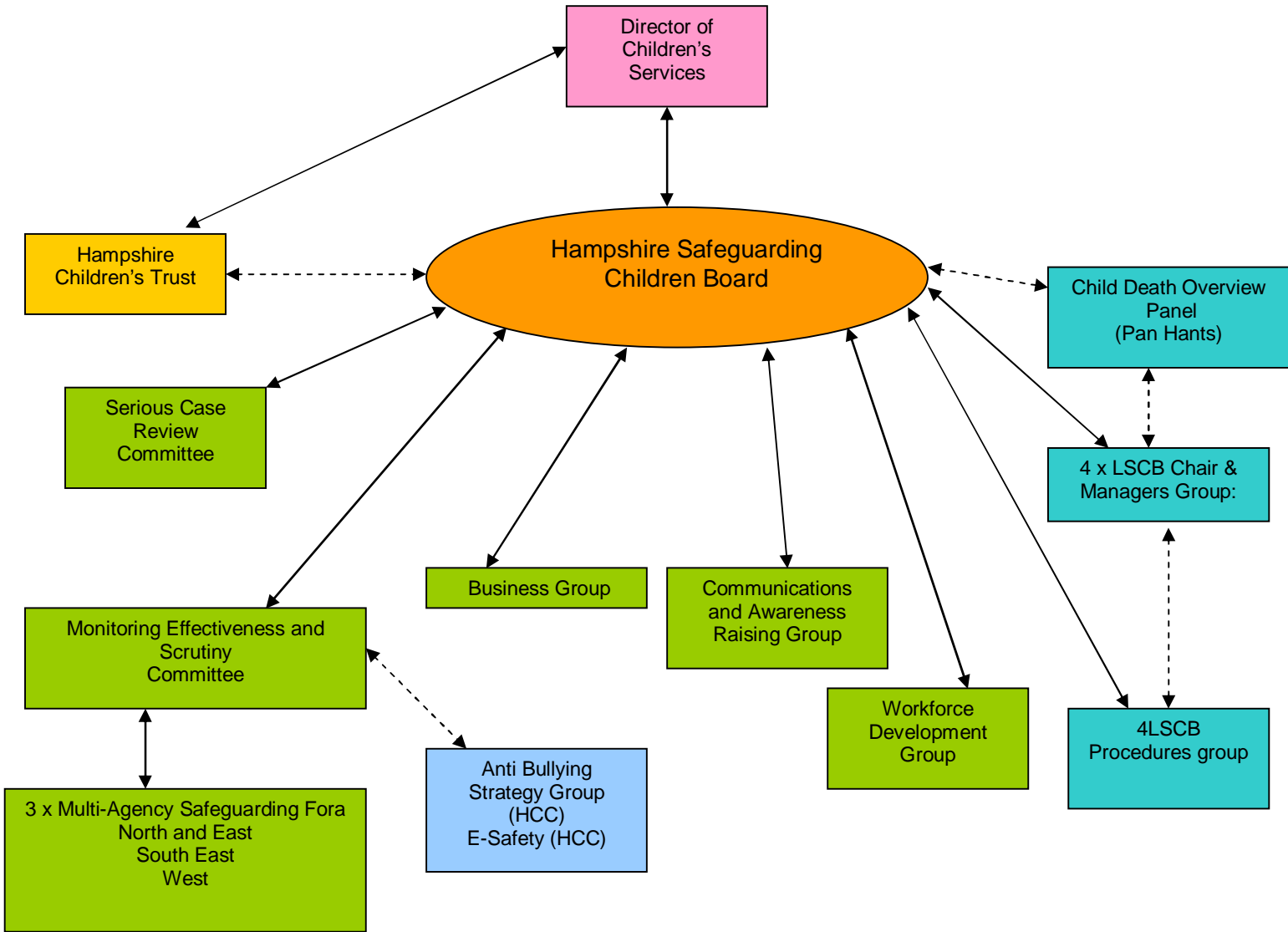
Hampshire is approximately 1,400 square miles with 1.25 million inhabitants.

The HSCB has the following structure:

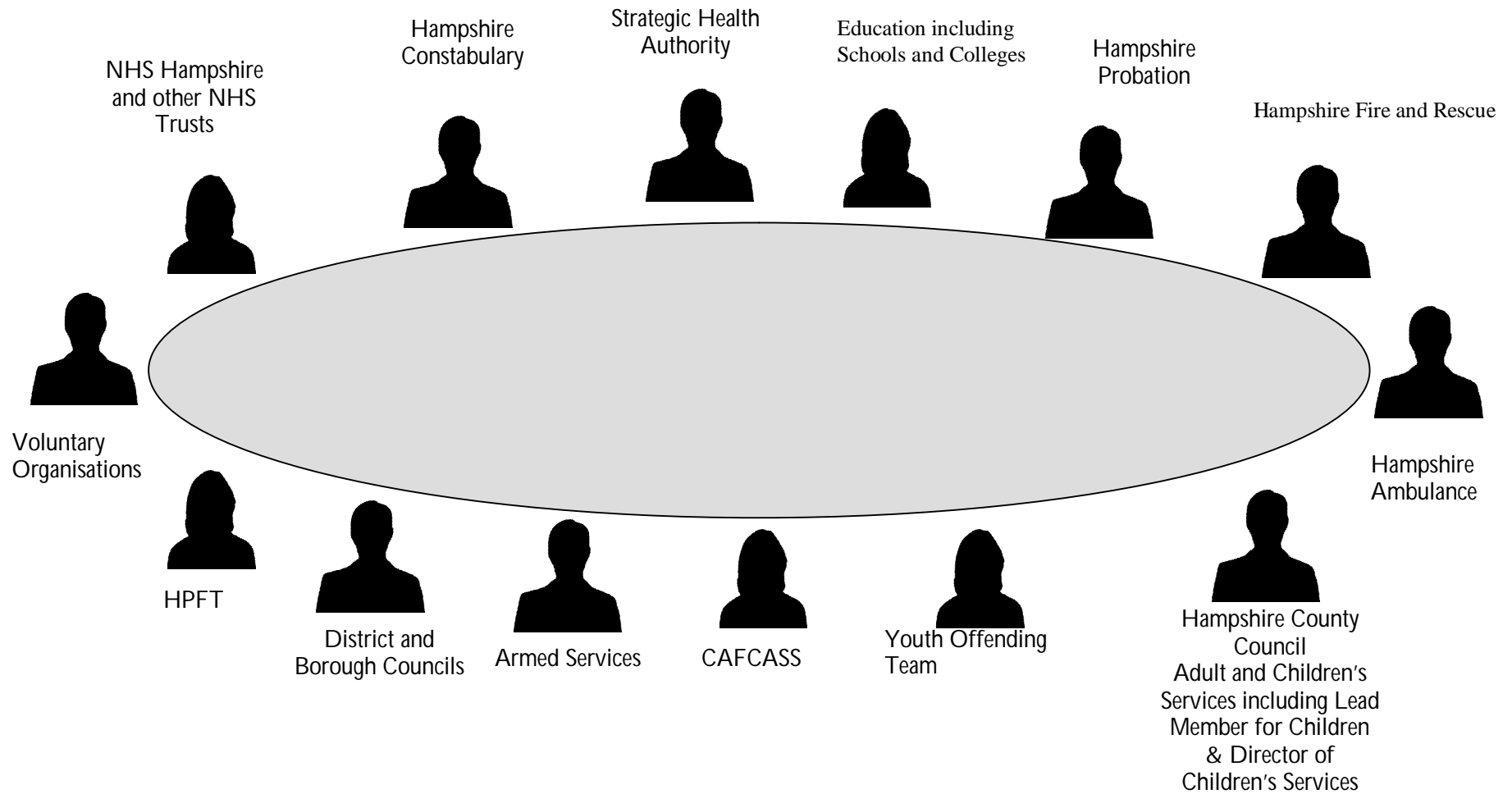
- ✚ The HSCB meets quarterly and takes responsibility for the delivery of the business plan and oversees the work of the sub-groups.
- ✚ There are seven sub-groups and three area based, multi-agency forum. Each sub-group and forum will have it's own work plan, driven by the HSCB business plan.
- ✚ The Chairs of the sub-groups will be members of the HSCB and will provide a written report to each of the HSCB meetings.
- ✚ The HSCB is accountable, through the Director of Children's Services to the Hampshire Senate and Hampshire County Council Cabinet
- ✚ The HSCB works closely with the LSCBs of the Isle of Wight, Portsmouth and Southampton.



The Organisational Structure of the HSCB



MEMBERSHIP



Member Biographies

Clare Chamberlain – HSCB Chair



Clare has worked for 30 years within the area of social care, firstly as a social worker for children with disabilities, then in a generic role and for the last 20 years in managerial positions. Clare began work in this area in Leicestershire but worked for most of her career in various London boroughs, the last of these roles as the Head of Children and Families Services in Islington. Clare moved on to work for Voice, a children's voluntary sector organisation for 2 years and since 2004 has been working freelance. The freelance work has provided a wide range of project and management roles, many with a safeguarding focus, for example serious case reviews, a research study of safeguarding in secure settings, and an analysis of child protection plans for children.

Steve Crocker – HSCB Vice Chair

Steve Crocker is the Deputy Director of Children's Services. He has line management responsibility for the Department's safeguarding services and all targeted services for children and families. Steve is a social worker and has worked as a practitioner in residential, fieldwork and management positions - always in services for children and young people. Most recently he was the head of Youth Offending Services for Wessex YOT. Steve has been a member of the LSCB since its inception and is the current vice-chair.

Karen Newham



Karen is the Designated Nurse for safeguarding for NHS Hampshire. Karen's background is in nursing and health visiting the latter working in the UK and in Germany and Cyprus for SSAFA with the Ministry of Defence. Karen has worked for Nottinghamshire SCB as a developmental officer before moving to Hampshire. Karen is a members of the HSCBs Business Group the chair of the SE MASF and the vice chair of SCR Committee.

“To keep children safe and promote their welfare all agencies and the wider community need to understand their responsibilities towards children. The HSCB provides the platform to discuss and challenge each other to enable the right discussions to be made and address the very real issues that face children and young people in Hampshire today.”

June 2011

John Coughlan

John Coughlan has been Director of Children's Services in Hampshire County Council since 2005. Previously he was Corporate Director of Social Care in Telford and Wrekin Council and Assistant Director for Children and Families in Dudley Council. His professional and managerial background was in Birmingham, primarily working with children in care.

Having been Chair of the Children and Families Committee of the Association of Director's of Social Services for two years, he became that association's last President in 2006, before becoming Joint President of the Association of Director's of Children's Services.



John was awarded a CBE in the 2009 New Year honours list in recognition of his work for children's services.

Chris Mitchell

Chris is the Hampshire Probation Area lead director on safeguarding children issues. As Director of Offender Management he is responsible for area's service delivery in relation to court work and the supervision of offenders on community orders and prison licence. Chris has spent eight years seconded to the home office, in the past, leading on pre-trial issues. He currently chairs the MAPPA strategic management board and is the strategic lead for public protection.

"Membership of the LSCB provides an important linkage across to the public protection agenda. Probation Officers need to be acutely aware of safeguarding children in the often difficult task of managing offenders in the community."

Simon Jones

Simon Jones is Designated Doctor for child safeguarding for NHS Hampshire. He is a paediatrician in Basingstoke where he has been a consultant for ten years, with a lead role for neurodisability and child protection. Simon works closely with the designated nurse to provide a strategic and professional lead on all aspects of the health service contribution to safeguarding children across Hampshire. There are over 300,000 children receiving services from nearly 1000 General Practitioners. Simon is a member of the LSCB Business Group and the Serious Case Review Committee.

'Being a part of the LSCB provides vital support to improving the way we work together to safeguard children'

Martin Devine



Martin is a representative of the District and Borough Councils within Hampshire. This role requires a good deal of communication with the eleven individual Councils, which regularly happens through the District Leads Group. As Head of Communities and Employment at New Forest, Martin is their Lead Officer for Children and Young People. In addition, he has involvement with economic development and the cultural services, both of which have significant agendas for children and young people.

“Being part of the Board really helps the Services of Districts and Boroughs to contribute to the safeguarding agenda and through this, positively affect the quality of life for children and young people in our local communities.”

Peter Warren

Peter is Clinical Development Manager for South Central Ambulance Service in Hampshire. An experienced Paramedic and Senior Manager within the Clinical Directorate, Peter has a lead role in Safeguarding Children and Adults for the trust. Peter is responsible for maintaining the standards of Clinical practice and underpinning educational and training levels. Peter also provides support and management to the PCT's Safeguarding Children teams.

‘Membership of the LSCB supports me in my role in both CDOP and working with other agencies. It brings alive the individual and cross organisational issues we face when working together to safeguard children.’

Debby Perriment

Debby is the Manager of Hampshire Safeguarding Children Board. She is a nurse, midwife and health visitor and has spent 15 years in specialist safeguarding children roles, in both acute and Primary Care Trusts. Debby has been chair of the HSCB Workforce Development sub-group for two years.

“It is vital that we focus on listening and responding to the needs of children. My role gives me the opportunity to drive forward and co-ordinate the multi-agency aspects of safeguarding the most vulnerable of these children”

Ian Langley

A qualified social worker who replaced Steve Crocker as Head of Wessex YOT in June 2009 following 5 years as Head of Wiltshire YOT where he also had strategic responsibility for young peoples substance misuse, young peoples accommodation issues and Teenage Pregnancy reduction. Whilst in Wiltshire he was also a member of the Wiltshire LSCB and Children's Trust Board.

Jo Lappin

Jo Lappin is Head of Safeguarding for Hampshire Partnership NHS Trust. Jo is a social worker who has worked in adult mental health for over 15 years in management posts across community, residential and day service settings. She also has previous experience in learning disabilities. In her most recent role in Southampton, Jo had responsibility for governance including learning lessons from serious incidents and is experienced in undertaking reviews and investigations. She was also the safeguarding lead for children and adults for Southampton Adult Mental Health. Jo brings the perspective of a social worker to a strategic role within an integrated specialist Mental Health and Learning Disabilities Trust and will be developing this new leadership role in relation to both safeguarding children and adults.

Sheila Owens-Cairns

Sheila Owens-Cairns is the Area Officer for Naval Personal & Family Service (NPFS) & RM Welfare and is responsible for the provision of a social work service and community service to the Royal Navy and Royal Marines across the Eastern Region and Overseas. She has been in post for 10 years.

Chris Etheridge

Chris Etheridge is the children young people and maternity lead at South Central SHA. She is an experienced senior manager and public health practitioner for both the NHS and Local government. Chris leads on CYP safeguarding for the SHA and provides both support on all health related policy development and challenge to PCTs that are seen to be underperforming in CYP service delivery. She is a statutory member of all the 13 regional authorities LSCBs, and aims to attend as many meetings as are possible within this role.

Angela Poingdestre

Angela Poingdestre is the Service Manager for CAF/CASS in North Hampshire. Angela's career in Social Care began in 1977. She worked for a short time as a social worker in Liverpool and then joined Merseyside Probation Service where she remained until her move to Hampshire in 1998. When CAF/CASS was established in 2001 Angela took up a post as a Service Manager initially in Surrey and more recently in Hampshire.

Jane Duncan

Jane Duncan is the Head of Safeguarding and Governance in Adult Services. Jane joined Hampshire County Council in 2006, following 15 years working in senior general and professional management roles within the NHS, spanning both provider and commissioning organisations. Jane is a nurse and midwife by professional background.

Bob Wythe

Bob is an Area Manager with Hampshire Fire and Rescue Service. Working within the Service Delivery Directorate Bob has the responsibility for community safety prevention activities and service delivery in the North East delivery area of Hampshire. Many of these activities bring HFRS into the direct contact with vulnerable groups, including children and young people. Bob's team introduced the safeguarding scheme across into the organisation and he is keen to embed HFRS into partnership arrangements for safeguarding.

Anthony Bravo

Anthony is the Principal of Basingstoke College of Technology and his passion and vision are to provide an outstanding learning experience for all its learners. His background is mainly in the education sector, with some 15 years in an FE environment; he also worked for two years for Marks and Spencer, having been their first black management trainee, based in the Marble Arch Flagship Store. Prior to moving to Basingstoke, Anthony was Principal at Crossways Academy, which had a significant impact on improving progression and achievement results in the local area. As Anthony points out, effective safeguarding is an essential part of providing an outstanding learner experience – if learners are not safe (or do not feel safe) how can they enjoy their time at college and how can they be expected to achieve?

Stephen Sheedy – Principal, Queen Mary's College

Stephen was born and brought up in Liverpool. He taught English in secondary schools and FE colleges, mostly in the North West of England, for some seventeen years. He was Vice-Principal at Priestley College, Warrington, from 1990-1995. In April 1995, he moved to work as Principal of Queen Mary's College, Basingstoke, a role he still greatly enjoys. He currently sits on the Aimhigher National Partnership Board and Advisory Board and chairs the Basingstoke and Deane Area Strategic Partnership.

Debby Gooderham – Headteacher, Marple Ridge School

I am currently Headteacher of Maple Ridge school which is a primary age special school in Basingstoke for children with moderate learning difficulties. I am therefore the special school representative on the Board. I have been Headteacher of this school for the past 5 years and have worked within the field of Special education for the majority of my teaching career.

Steve Handforth

Steve is the chair of the MESC and chairs the Western MASF. Steve has operational line management responsibility for the Departments safeguarding services and targeted services for families in the Western area of Hampshire and reports to the Deputy Director. Steve is a social worker and has worked as a practitioner in fieldwork and management positions always within the field of child protection.

Paula Shobbrook , Chief Nurse, Winchester and Eastleigh Healthcare NHS Trust

Paula qualified in 1991 and joined the Trust as Deputy Director of Nursing in 2002.

Her clinical background is predominately in acute medicine: she was a ward sister of a cardiac unit, a senior sister of a respiratory medical ward and respiratory support unit.

She has held senior management positions with a Primary Care Trust and has been a senior nurse in a University Hospital Trust Transformation and Modernisation Team. She is particularly interested in patient safety and service development.

Paula has been in her substantive role as Chief Nurse since January 2009.

The Chief Nurse is also the Director of Infection Prevention and Control responsible for patient safety and quality, and the executive lead for Safeguarding Children and Vulnerable Adults.



Jason Hogg

Jason is a Detective Superintendent in Hampshire Constabulary and is the strategic lead for safeguarding as Head of the force Public Protection Department. The department is responsible for child safeguarding, the safeguarding of vulnerable adults, domestic violence, missing persons and the management of sex offenders and other dangerous offenders. Jason recently took up this post having worked as the head of Major Crime Team in Hampshire Constabulary and currently chairs a regional working group on child protection.

Members:

Name	Role/Agency	Contact Details
Clare Chamberlain	Independent Chair	clare.chamberlain@hants.gov.uk
Steve Crocker	Deputy Director CSD	steve.crocker@hants.gov.uk
John Coughlan	Director CSD	john.coughlan@hants.gov.uk
Martin Devine	District Council	martin.devine@nfdc.gov.uk
Jason Hogg	Hampshire Constabulary	Jason.hogg@hampshire.pnn.police.uk
Chris Mitchell	National Probation Office	Chris.Mitchell@hampshire.probation.gsi.gov.uk
Ruth Milton	Director of Public Health	ruth.milton@hampshire.nhs.uk
Jo Lappin	NHS Trust	Jo.Lappin@hantspt-sw.nhs.uk
Angela Poingdestre	CAFCASS	Angela.Poingdestre@CAFCASS.GOV.UK
Sheila Owens- Cairns	Armed Services	dpersaonpfs@a.dii.mod.uk
Chris Etheridge	Strategic Health Authority	Chris.Etheridge@southcentral.nhs.uk
Christine Jones	Education	Christine.1.Jones@hants.gov.uk
Debby Perriment	Board Manager	debby.perriment@hants.gov.uk
Karen Newham	Designated Nurse	Karen.Newham@hampshire.nhs.uk
Simon Jones	Designated Doctor	simon.jones@hampshire.nhs.uk
Jane Duncan	Adult Services HCC	Jane.duncan@hants.gov.uk
Ian Langley	Wessex YOT	Ian.langley@hants.gov.uk
Peter Warren	South Central Ambulance Service	Peter.warren@scas.nhs.uk

Jenny Frank	Children's Society	Jenny.Frank@childrenssociety.org.uk
Bob Wythe	Hampshire Fire	Bob.wythe@hantsfire.gov.uk
Anthony Bravo	Further Education	anthony.bravo@bcot.ac.uk
Debby Gooderham	Education	debby.gooderham@mapleridge.hants.sch.uk
Stephen Sheedy	Education	stephen.sheedy@qmc.ac.uk
Dr Ian Johnson	Education	Ian.Johnson@brunepark.hants.sch.uk
Paula Shobbrook	Winchester and Eastleigh Healthcare NHS Trust	paula.shobbrook@wehct.nhs.uk
Helen Greatorex	Sussex CAMHS	Helen.Greatorex@sussexpartnership.nhs.uk
Stephen Handforth	CSD	Stephen.handforth@hants.gov.uk
Janet Taylor	Infant School representative	Janet.taylor@grange-inf.hants.sch.uk
Donna Green	Basingstoke & North Hampshire Foundation Trust	Donna.Green@bnhft.nhs.uk

The Board is supported by:

Sam Smith	HSCB Administrator	samantha.smith@hants.gov.uk
Sam Ward	HSCB Administrator	sam.ward@hants.gov.uk

Hampshire Safeguarding Children Board, Clarendon House, Monarch Way,
Winchester, SO22 5PW
01962 876230

Role and Responsibilities of LSCB members

Contribute fully and effectively to the work of the HSCB.

Contribute to developing and maintaining strong and effective inter-agency safeguarding procedures and protocols.

Ensure that any necessary recommendations are made regarding the adequate resourcing of child protection services.

Provide the HSCB with specified management information about the level of safeguarding work, type and trends.

Abide by the Constitution of the HSCB.

ACCOUNTABILITIES

To attend all meetings of the HSCB and when unable to do so, send apologies in advance and supply an appropriate deputy. Agencies must ensure 100% attendance. Deputisation should not occur for more than 25% of scheduled meetings.

To ensure agency resourcing and contribution to resourcing is adequate and appropriate.

To ensure that they have the appropriate level of delegated authority from their agency to enable them to conduct the business of the Board

To ensure decisions with regard to safeguarding made by the Board are enacted within own agency.

To ensure strategic agency issues are brought to the attention of the Board.

To field appropriate agency representatives to work on HSCB sub- committees.

To maintain a clear focus on the safeguarding needs of children.

To appreciate the roles and responsibilities of member agencies in protecting children.

To maintain proactive engagement in the work of the HSCB.

To recognise the implications of and key issues involved in multi-disciplinary working.

To represent their agency from a strategic standpoint.

DECISION-MAKING AUTHORITY

To respect and adhere to the decision making requirements as set out in the HSCB Constitution.

To ensure that they have the appropriate level of delegated authority from their agency to enable them to conduct the business of the Board. Members must hold senior management positions within their organisation and be able to commit their agencies to joint working.

RELATIONSHIPS

Promote and enhance effective working relationships with:

- Own agency
- HSCB as a corporate body
- Agency representatives on the other HSCB Sub-Committees

SPECIFIC RESPONSIBILITIES

To prepare for meetings by reading minutes and associated papers

To have actioned any areas agreed at the previous meeting

To discuss issues relevant to HSCB business, within the agency and be prepared to contribute from the agency standpoint.

To be willing to offer a representative view from their area of work and/or organisation to discussions.

To establish a process for the way decisions taken at HSCB are fed in to their agency/organisation ensuring that processes are in place for implementation.

To provide information within the agency, increase awareness of the role and responsibilities of the HSCB and ensure the agency adheres to these.

To ensure that their agency has a strategy in place to disseminate and deliver HSCB guidance and the learning from Serious Case Reviews.

To provide agency specific information to the HSCB as required by producing or ensuring the production of reports to/from agency/organisation as appropriate (e.g. report of monitoring of standards of child protection practice within agency).

To meet deadlines as agreed by HSCB

To accept shared responsibility for the satisfactory completion of the HSCB Work Programme by undertaking tasks as appropriate, including participation in sub-committees (or fielding of staff to participate in sub-committees where relevant).

To ensure agency resources are made available for Serious Case Reviews and Small Scale Audits as required, including the management report.

To take back into their agency/organisation policy issues and developments. Ensure that processes are in place for implementation.

To contribute to the development of policy, on behalf of their agency/organisation (therefore members are required to be familiar with the 'position' their agency/organisation holds on issues).

To establish an effective system(s) for being briefed by their agency or liaison within their profession about views on child protection matters.

To contribute to the annual Business Plan. To assist in discussions on the HSCB resourcing.

To review the membership of the HSCB and ensure that it is both representative and effective.

Co-operate with the Serious Case Review, Small Scale Audit and Child Death Review Process and ensure that the appropriate action is taken within the agency/organisation represented and between agencies.

To respect confidentiality of sensitive information provided by the constituent agencies of the HSCB.

To participate in consultation and decision making on individual case issues as set out in the HSCB procedures.

To agree any response to media enquiries with the Chair of the HSCB and constituent agencies as appropriate.

Roles and Responsibility of sub-group members

To actively participate in the work plan of the sub-group

To represent the view of their agency and to feedback to that agency from the sub-group

Sub Groups and Contacts

C.A.R.G.

The aim of the CARG is communicating to professionals, the public and other bodies in the Local Authority area the need to safeguard and promote the welfare of children, raising their awareness of how this can best be done, and encouraging them to do so.

To do this the group will communicate and raise awareness through publicity campaigns offering information, advice and guidance about safeguarding issues. The group will consult with Children & Young people to achieve it's aims.

Chair:

Christine Jones

01962 846338

Vice Chair:

Min Partner

02380 688000

M.E.S.C.

The function of the MESC is to co-ordinate the scrutiny, auditing , monitoring and reporting of inter-agency professional practice in relation to the business of the HSCB. The MESC will report it's findings to the HSCB.

Chair:

Stephen Handforth

01264 387421

Vice Chair:

Karen Rudland

01256

Workforce Development

The Workforce Development sub-group aims to ensure that the children's workforce, including those who provide services to parents and carers, have the knowledge and skills to safeguard children.

Following analysis of interagency training needs, a programme is developed and funded by the HSCB partnership. This programme reflects the current learning, from national and local serious case reviews, as well as issues facing our children, such as forced marriage.

Chair:

Recruiting

Vice Chair:

Chris Halling

01962 845059

Serious Case Review Committee (SCRC)

The purpose of the SCRC is to enable the Hampshire Safeguarding Children Board (HSCB) to fulfil its statutory duty to undertake serious case reviews (SCRs). The committee considers whether cases referred to it meet the criteria for a SCR or smaller scale audit as defined in chapter 8 of Working Together 2006, and makes a recommendation to the HSCB Chair who decides whether to undertake one. The SCRC then commissions the SCR and monitors the SCR or smaller scale audit, action plans arising from the reviews or audits.

Chair:

Clare Chamberlain

01962 876230

Vice Chair:

Karen Newham

01329 229470

M.A.S.F.

The Multi Agency Safeguarding Forum (MASF) reports to the LSCB through the Monitoring and Effectiveness Scrutiny Committee (MESC). There are three area fora: Western, North and East and South East and the areas are coterminous with a number of District Council boundaries. The chair is from one each of Children's Services, Police and Health. The groups are multi agency and are designed to bring in locally based managers in order to promote joint working, identify local issues, resolve difficulties or issues at a local level, manage locally based audit activity, and organise awareness raising or training sessions for local staff as appropriate. Meetings are held about 5 times a year but the fora may set up small task groups for specific actions if required, for example to undertake audit work. The chairs report on the work that they do through regular meetings of the MESC, and they may be tasked by the MESC to undertake specific pieces of work or research.

Chair: MASF N&E

Recruiting

Vice Chair:

Helen Hudson

01256 314950

Chair: MASF SE

Karen Newham

01329 229470

Vice Chair:

Claire Hughes

02392 446633

Chair: MASF West

Recruiting

Vice Chair:

Chris Hampson

01962 824770

HSCB Business Group

A small Business Group has been

Chair: Steve Crocker

01962 847991

developed to carry out the everyday non-strategic business of the Board and monitor the progress of the HSCB business plan.

C.D.O.P.

Through a comprehensive and multi-disciplinary review of child deaths, the Hampshire, Isle of Wight, Portsmouth and Southampton Local Safeguarding Children Board's Child Death Overview Panel aims to better understand how and why children in our locality die and use our findings to take action to prevent other deaths and improve the health and safety of our children

Panel Manager

Jennie Harmstron

Jennie.harmston@southampton.gov.uk

HSCB Representative:

Ruth Milton

02380 627432

4LSCB Procedures group

The 4LSCB's share the development of policies and procedures as much of the work of our member agencies is across Local Authority Boundaries.

Chair: Debby Perriment

01962 876231

Other groups form as shorter term working groups. In 2010 this included a Safeguarding Children with Disabilities and a Trafficked Children group. County wide E-Safety and Anti-Bullying groups fed their work into the HSCB via the MESC.

Glossary

ACPO	Association of Chief Police Officers
CAFCASS	Child and Family Court Advisory and Support Service
CARG	Communication and Awareness Raising Group
CDOP	Child Death Overview Panel
CEOP	Child Exploitation and Online Protection
CSD	Children's Services Department
HSCB	Hampshire Safeguarding Children Board
LAA	Local Area Agreement
LADO	Local Authority Designated Officer
LSCB	Local Safeguarding Children Board
MAPPA	Multi-Agency Public Protection Arrangements
MASF	Multi-Agency Safeguarding Forum
MESC	Monitoring and Effectiveness Scrutiny Committee
NHSH	NHS Hampshire
PCT	Primary Care Trust
SCB	Safeguarding Children Board
SCR	Serious Case Review
SSAFA	Soldiers, Sailors, Airmen and Families Association
YOT	Youth Offending Team
WFDG	Workforce Development Group

Key Safeguarding Documents

The core legislation underpinning the work of the LSCB is the **Children Act 1989** and the **Children Act 2004**, which provide a comprehensive framework for the care and protection of children whilst reflecting the principles of the **Rights of the Child** and the **European Convention on Human Rights**.

The services provided by LSCB are shaped by guidance issued by the Department for Education, the Department of Health and the Home Office, notably **Working Together to Safeguard Children (2010)**.

Local practice is guided by the 4LSCB Safeguarding Children Procedures www.4lscb.org.uk

- **Working Together to Safeguard Children 2010** A guide to inter-agency working to safeguard and promote the welfare of children, HM Government 2010 www.everychildmatters.gov.uk/resources-and-practice/IG00060/
- **Statutory guidance on making arrangements to safeguard and promote the welfare of children under section 11 of the Children Act 2004**, Department for Education and Skills, 2005 www.everychildmatters.gov.uk/files/FF30C3EA8250871345738CFA44EA3197.pdf
- **What To Do If You're Worried A Child Is Being Abused** Department of Health Publications, 2006 www.everychildmatters.gov.uk/resources-and-practice/IG00182/
- **Children's Act 2004** HMSO, London, 2004 www.hmso.gov.uk/acts/acts2004/20040031.htm
- **Children's Act 1989** HMSO, London, 1989 www.opsi.gov.uk/acts/acts1989/Ukpga_19890041_en_1.htm
- **Every Child Matters: Change for Children** www.everychildmatters.gov.uk/
- **Rights of the Child** United Nations, 1989 www.unicef.org/crc
- **The Local Safeguarding Children Boards Regulations 2006 (Statutory Instrument 2006 No. 90)** www.opsi.gov.uk/si/si2006/20060090.htm
- **European Convention of Human Rights** Rome, 1950 www.hrcr.org/docs/Eur_Convention/euroconv.html
- **The Effectiveness of LSCB**

Further links can be found on the LSCB website www.4lscb.org.uk